

Contents:

I. Assignment of fingerprint and PIN.....	03	VII. Setup of passage mode.....	13
II. Factory default setting.....	03	VIII. Cancellation of passage mode.....	13
III. Initialisation of the door unit.....	04	IX. Use of emergency key.....	13
IV. Enrolment of fingerprint users.....	05	X. Use of external power.....	14
V. Deletion of fingerprint user.....	09	XI. Change of batteries.....	14
VI. Access by fingerprint/PIN.....	12		

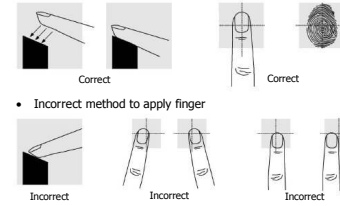


Note:

- Keep your fingers clean when using this product.
- The dirt on the surface of fingerprint collection window after some time in use may affect normal use, therefore please keep clean.
- New lock which is just out of factory can be unlocked with any fingerprint.
- When opening the door, if the lock beeps and the indicator flashes red this is the warning that the unit has insufficient power and therefore the batteries will need to be changed.
- This product can save 120 fingerprints, may we suggest each user enrol at least two fingerprint templates.
- DO NOT clean the surface of the lock with corrosive substances, or else the protection layer may become damaged and thus influence the gloss of the lock surface. Therefore please clean the surface periodically with "furniture polish" (e.g. "Pledge").
- If the latch bolt fails to draw back and forth freely, or the door cannot be closed normally, this may be due to distortion of the door, therefore adjust the strike plate to correct position.
- When the fingerprint and PIN fail to open the door, use the mechanical key.

• Correct method to apply finger

**Note:** When the red light on the fingerprint window flashes, press your finger onto the window and then remove your finger after the beep, again after 2 seconds place your finger against upon the fingerprint window, if you hear two long beeps the fingerprint was successfully saved.



• Instructions of the lock buttons:

Buttons	Function in setup state	Other Functions
Button "0"	Door lock activation key	Setting normal open
Button "1"	Enter setting status	Representing Master fingerprint user group
Button "2"	Enter deletion mode	Representing general fingerprint user group
Button "3"	Enter PIN setting status	Representing temporary fingerprint user group

• Indication of the lock state

1. Operation succeeded: Green light on, with two long beeps.
2. Operation failed: red light on, with two short beeps.
3. Unlocking indication: motor makes a rolling sound for the first time, indicating the lock is in its open state.
4. Locking indication: motor makes a rolling sound for the second time, indicating the lock is in its closed state.
5. Free passage mode indication: the lock makes a beep, after the successful setup, the green indicator light flashes every 5 seconds.

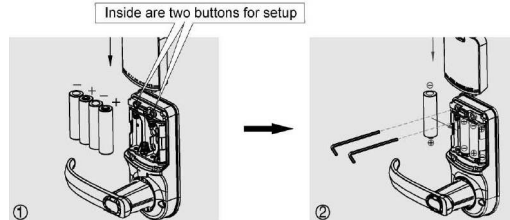
I. Assignment of fingerprint and PIN

Types	Quantity	Privilege
Master fingerprint	10	Setting normal open
Member fingerprint	90	General access
Temporary fingerprint	20	General access
PIN	1	General access

II. Factory default setting:

Factory default setting PIN: 123 123 123 12  
Under the factory default setting, any fingerprint can unlock the unit.

III. Initialization of the door lock:



Specific operations:

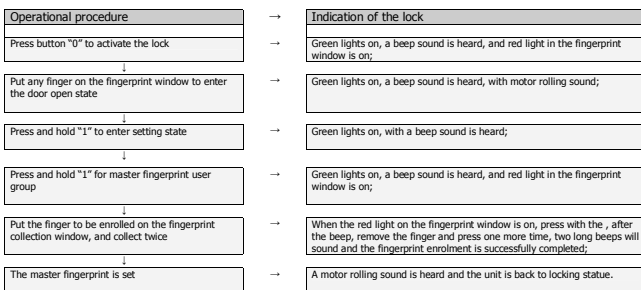
1. Press on the battery cover button, slide the battery cover upwards and remove it, you will be able to see two holes, one either side of the button and inside each hole there is a button for setup.
2. Remove one of the four batteries, press one of the digits on the keypad to confirm the power is successfully cut off, then insert into the two holes, the two hexagon wrenches to press the buttons at the same time, hold it tight (DO NOT RELEASE) and then replace the battery. The lock then is re-powered, if you hear the beep after 5 seconds, the initialization of the lock is successfully complete.

**Note:** After initialisation of the lock, all enrolled fingerprints and PIN within the memory of the unit are cleared.



IV. Enrolment of master/general/temporary fingerprints

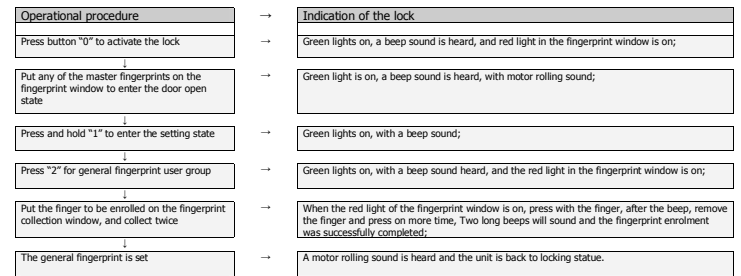
• Enrolment of master fingerprint user



**Note:** 1. under the factory default setting, any fingerprint can unlock the unit.  
2. After successful enrolment of the first master fingerprint, the lock will only accept enrolled fingerprint for access, and the default password will be deleted.



• Enrolment of general fingerprint





• Enrolment of temporary fingerprint user

Temporary fingerprint user; for those who have the access of the door temporarily (e.g. maid, workers, friends). You can delete the temporary fingerprint any time you like.

Operational procedure	Indication of the lock
Press button "0" to activate the lock	Green lights on, a beep sound is heard, and red light in the fingerprint window is on;
Put any of the master fingerprints on the fingerprint window to enter the door open state	Green light is on, a beep sound is heard, with motor rolling sound;
Press and hold "1" to enter the setting state	Green lights on, with a beep sound;
Press "3" for temporary fingerprint user group	Green lights on, with a beep sound heard, and the red light in the fingerprint window is on;
Put the finger to be enrolled on the fingerprint collection window, and collect twice	When the red light of the fingerprint window is on, press with the finger, after the beep, remove the finger and press on more time, Two long beeps will sound and the fingerprint enrolment was successfully completed;
The temporary fingerprint is set	A motor rolling sound is heard and the unit is back to locking statue.



• Setup of PIN

Operational procedure	Indication of the lock
Press button "0" to activate the lock	Green lights on, a beep sound is heard, and red light in the fingerprint window is on;
Put any of the master fingerprints on the fingerprint window to enter the door open state	Green light is on, a beep sound is heard, with motor rolling sound;
Press and hold "3" to enter the setting state	Green lights on, with a beep sound;
Enter the 11 digit PIN as you like (The PIN must not start with "0")	After the imputation of the PIN, green lights on, with two long beeps, and the pin imputation successfully completed;
PIN is set	A motor rolling sound heard and the unit back to locking statue

Note: 1. PIN must be 11-digits and must not start with "0".  
2. When setting the PIN, if any input PIN starts with "0", the PIN will be invalid and cannot open the door.



V. Deletion of fingerprint

• Deletion of master fingerprint user group

Operational procedure	Indication of the lock
Press button "0" to activate the lock	Green lights on, a beep sound heard, and red light in fingerprint window is on;
Put any of the master fingerprints on the fingerprint window to enter the door open state	Green light is on, a beep sound is heard, with motor rolling sound;
Press and hold "2" to enter the deletion state	Green lights on, with a beep sound;
Press "1" to confirm master fingerprint user group to be deleted	Green lights on, a rising tone sound is heard, red light in the fingerprint window is on, and a beep sound is heard
Deletion of master fingerprint user group successfully completed	A motor rolling sound heard and the unit back to locking statue

Note: 1. once the deletion of the master fingerprint user group is completed, the unit will return to factory default setting, all the fingerprints will be deleted and the PIN reset to factory setting.  
2. Another method to set the lock back to factory setting (Initialisation of unit)  
Press on the battery cover button, slide the battery cover upwards and remove it, you will be able to see two holes, one either side of the button and inside each hole there is a button for setup; Remove one of the four batteries, press one of the digits on the keypad to confirm the power is successfully cut off, then insert into the two holes, the two hexagon wrenches to press the buttons at the same time, hold it tight (DO NOT RELEASE) and then replace the battery. The lock then is re-powered, if you hear the bleep after 5 seconds, the initialization of the lock is successfully complete.



• Deletion of general fingerprint user

Operational procedure	Indication of the lock
Press button "0" to activate the lock	Green lights on, a beep sound heard, and red light in fingerprint window is on;
Put any of the master fingerprints on the fingerprint window to enter the door open state	Green light is on, a beep sound is heard, with motor rolling sound;
Press and hold "2" to enter the deletion state	Green lights on, with a beep sound;
Press "2" to confirm general fingerprint user group to be deleted	Green lights on, a rising tone sound is heard, red light in the fingerprint window is on, and a beep sound is heard
Deletion of general fingerprint user group successfully completed	A motor rolling sound heard and the unit back to locking statue



• Deletion of temporary fingerprint user group

Operational procedure	Indication of the lock
Press button "0" to activate the lock	Green lights on, a beep sound heard, and red light in fingerprint window is on;
Put any of the master fingerprints on the fingerprint window to enter the door open state	Green light is on, a beep sound is heard, with motor rolling sound;
Press and hold "2" to enter the deletion state	Green lights on, with a beep sound;
Press "3" to confirm temporary fingerprint user group to be deleted	Green lights on, a rising tone sound is heard, red light in the fingerprint window is on, and a beep sound is heard
Deletion of temporary fingerprint user group successfully completed	A motor rolling sound heard and the unit back to locking statue

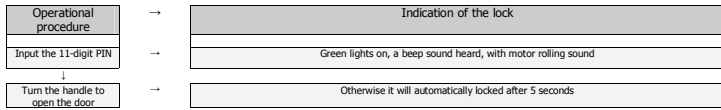


VI. Access by fingerprint / PIN

• Access by fingerprint

Operational procedure	Indication of the lock
Press button "0" to activate the lock	Green lights on, a beep sound heard, and red light in fingerprint window is on;
Put any enrolled fingerprint on the fingerprint window for recognition	Green light is on, a beep sound is heard, with motor rolling sound;
Turn the handle to open the door	Otherwise it will automatically locked after 5 seconds

• Access By PIN



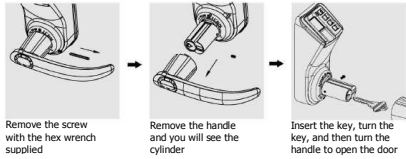
VII. Setup of passage mode

Press and hold button "0" within 5 seconds of the door opening, and the passage mode is set.

VIII. Cancellation of passage mode

When the lock is in passage mode, place an enrolled fingerprint or input the valid PIN to cancel the passage mode.

IX. Use of emergency key

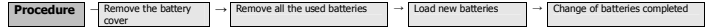


X. Use of external power

If it fails to operate the lock normally due to insufficient voltage, use a 9V battery for emergency power supply (pay attention to the positive and negative points of the battery), and then place an enrolled fingerprint or input the PIN to open the door.



XI. Change of batteries



Notes:

- When loading the batteries, operate correctly with attention to the sign of positive and negative points in the battery box!
- When changing batteries, never mix the new batteries with the old.

Phenomenon	Cause	Solution
Press the finger on the fingerprint collection window to open the door, red light is on together with two short beeps, and fails to open the door.	<ol style="list-style-type: none"> <li>This fingerprint might be illegal.</li> <li>This fingerprint has already been cleared.</li> </ol>	Apply a valid fingerprint
Open the door with a valid fingerprint, red light is on with two short beeps, and fails to open the door.	<ol style="list-style-type: none"> <li>There is a large difference with the position of the valid fingerprint.</li> <li>The fingerprint is damaged</li> </ol>	Press the finger on the collection window again, trying to minimize the difference of the position, with that at the time of enrollment.
Red light is constantly on	<ol style="list-style-type: none"> <li>Low battery voltage</li> <li>PCB failure</li> </ol>	<ol style="list-style-type: none"> <li>Change the batteries</li> <li>Check cable connection</li> </ol>
Alarm sounds when opening the door	Low battery voltage	Change the batteries
No response after pressing the buttons	<ol style="list-style-type: none"> <li>No battery</li> <li>Key locked</li> </ol>	<ol style="list-style-type: none"> <li>Change the batteries</li> <li>try to gain access 3 minutes later</li> </ol>
Often fails to verify the fingerprints	<ol style="list-style-type: none"> <li>The finger is too dirty</li> <li>The finger is too dry</li> <li>The finger is too wet</li> <li>The collection window is too dirty</li> <li>The finger is pressed on the collection window incorrectly</li> </ol>	<ol style="list-style-type: none"> <li>Clean the finger</li> <li>Moisten the finger</li> <li>Wipe the finger</li> <li>Clean the collection window</li> <li>Press the finger as advised on page 2</li> </ol>
Fail to enter the enrolment or deletion mode	<ol style="list-style-type: none"> <li>The finger for the unlock is not the master finger</li> <li>The operational procedure is incorrect</li> </ol>	<ol style="list-style-type: none"> <li>Confirm that you can unlock with the master finger</li> <li>Review the instructions ensuring that all the stages have been followed or contact supplier</li> </ol>