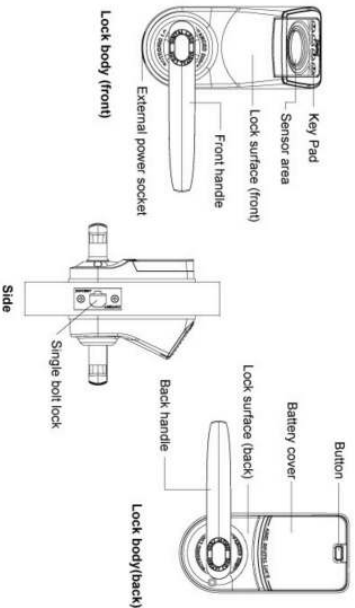


● Name of the parts



● Description of the keypad

Keypad	Function in setup state
Button "0"	Normal open
Button "1"	For enroll Master; User
Button "2"	For deleting user; master; PIN
Button "3"	For setting PIN

● Door lock indication

1. Operation succeeded: Green light on, with two long beeps.
2. Operation failed: Red light on, with two short beeps.
3. Unlocking indication: Electronic motor makes a rolling sound after a authorized card is scanned
4. Locking indication: After five seconds the electronic motor makes a rolling sound, indicate that the lock is in closed state.
5. Passage mode indication: Indicator light flashes once every five seconds.

I. Card and PIN

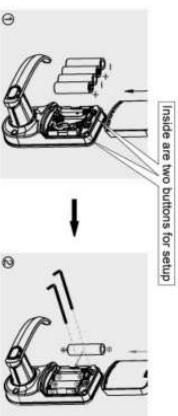
Type	Quantity	Privilege
Master card	1	To unlock, enroll and delete card, edit password, normal open
PIN	1	Unlock, delete Master card and delete user card, change PIN, and normal open
User card	119	Unlock and normal open

II. Factory mode: Factory default PIN "123 123 123 12" , any milfare card can unlock.

Contents

I. Card and PIN	03
II. Factory mode	03
III. How to reset the lock	04
IV. Enroll Master card, User card and PIN.....	05
V. How to delete User card and Master card (delete User card one by one)	07
VI. The personal PIN	09
VII. How to set normal open	13
VIII. How to cancel normal open	13
IX. Use of mechanical key	13
X. Use of external power.....	14
XI. Change battery.....	14
XII. Trouble shoot.....	15

III. How to reset the lock



Specific operations:

- 1) Take off the battery cover, you can see one hole at each side on top of the batteries. Inside each hole there is a button for set up.
- 2) Remove one of the four batteries, press the buttons on the front side to confirm the power is cut off, then insert into the two holes to press the buttons with two slim objects, at the same time, hold it tight (not to release), and reinstall the battery. Do not release the buttons until a 'toot' sound is heard (about 5 seconds). The initialization of the lock is successfully completed, and you may lose the slim object.

Note: After initialization of the lock, any enrolled information is removed, the lock back to factory mode, any milfare card can unlock.

IV. Enroll Master card, User card and PIN

- Enroll Master card (when the lock is in default factory setting)

Operational procedure	Indication of the lock
Enter default unlocking code 123 123 123 12	One beep and motor sound
Press '1' to enter the setting state	One beep, green light on and red light flashes
Put the first mifare card close to the sensor area	One beep sound
Master card is set	Light off, motor sound, door lock exit setting state

Note: ① When first time enrolling card, the first card enrolled is the Master card, and the rest is users' card.
 ② After the first Master card is set, the factory default PIN is deleted, user must set a new PIN.
 ③ When set the user card, the lock has two short beeps, setting the third user card, the lock has three short beeps.

V. How to delete User card and Master card (delete User card one by one)

- How to delete User card

Operational procedure	Indication of the lock
Unlock with Master card	A beep sound and the motor sound
Press '2' enter the deletion state	One beep, green light on with red light flashing
Put the card that you want to delete on the lock sensor area	One beep with a up tone sound
Deletion is done	Light off, motor sound, door lock exit setting state

- How to enroll users

Operational procedure	Indication of the lock
Unlock with Master card	A beep sound and the motor sound
Press '1' enter the setting state	One beep, green light on with red light flashing
When enrolling the next card, simply put the next card close to the sensor	Two short beeps
The user card is enrolled successfully	Light off, motor sound, door lock exit setting state

Note: When set the User card, the lock has two short beeps, setting the third User card, the lock has three short beeps.

- How to set PIN

Operational procedure	Indication of the lock
Unlock with Master card	A beep sound and the motor sound
Press '3' to enter the PIN setting state	One beep, green light on with red light flashing
Enter a new 11 digit PIN	Light off, a beep and the motor sound
The PIN is set	

- How to delete the Master card

Operational procedure	Indication of the lock
Unlock with Master card	A beep sound and the motor sound
Press '2' enter the deletion state	One beep, green light on with red light flashing
Put the Master card that you want to delete on the lock sensor area	Two beep with a up tone sound
Master card is deleted	Light off, motor sound, and door lock exit setting state

Note: ① When the Master card is deleted, the lock is back to the factory mode, any card can unlock the lock, the default PIN is 123 123 123 12.
 ② When the user card is lost, to delete the lost user card, simply reset the lock back to factory default mode. (see page 4, or page 8).

VI. The personal PIN**1. How to enroll and delete user card with PIN****(1) How to enroll users**

Operational procedure	Indication of the lock
Enter the new 11 digit PIN ↓	A beep sound and the motor sound
Press '1' enter the setting state ↓	One beep, green light on with red light flashing
When enrolling the next card, simply put the next card close to the sensor ↓	Two short beeps
The user card is enrolled successfully	Light off, motor sound, and door lock exit setting state

(2) How to delete user card

Operational procedure	Indication of the lock
Enter the new 11 digit PIN ↓	A beep sound and the motor sound
Press '2' enter the deletion state ↓	One beep, green light on with red light flashing
Put the card that you want to delete on the lock sensor area ↓	one beep with a up tone sound
Deletion is done	Light off, motor sound, and door lock exit setting state

2. How to delete the Master card

Operational procedure	Indication of the lock
Enter the new 11 digit PIN ↓	A beep sound and the motor sound
Press '2' enter the deletion state ↓	One beep, green light on with red light flashing
Put the Master card that you want to delete on the lock sensor area ↓	one beep with a up tone sound
Master card is deleted	Light off, motor sound, and door lock exit setting state

Note: 1. When the Master card is deleted, the lock is back to the factory mode, any card can unlock the lock.

the default PIN is 123 123 123 12

2. PIN is used as master card, it can enroll and delete user cards, therefore always keep the PIN with the owner.

3. How to set PIN

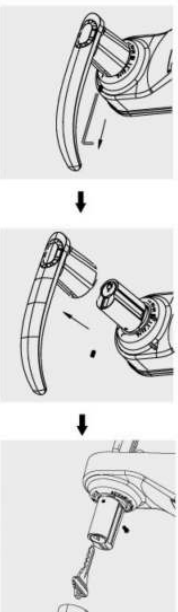
Operational procedure	Indication of the lock
Enter the 11 digit PIN ↓	A beep sound and the motor sound
Press '3' to enter the PIN setting state ↓	One beep, green light on with red light flashing
Enter a new 11 digit PIN ↓	Light off, a beep and the motor sound
A new PIN is set	

VII. How to set normal open

After unlocking the lock, press the keypad 0 within five seconds, and the green light flashes once every five seconds.

VIII. How to cancel normal open

When the lock is in Normal open state, enter a valid PIN or use a valid card to unlock.

IX. Use of mechanical key

Use Allen wrench provided to unscrew the handle screw

Take off the handle

Insert the Key

Borglocks**8000 Operation Manual****XII. Trouble shoot**

Symptoms	Possible cause	Solution
Can not unlock with PIN	1 Wrong PIN 2 This PIN may be deleted 3 Did set the PIN	Please use a correct PIN
Red light stays on	1 battery at low voltage 2 Faulty PCB	1 Change battery 2 Contact the local dealer
Can no enter mirfare setting state, can not enroll or delete mirfare card	1 Wrong master card 2 Wrong operation procedure	1. Make sure the Mirfare card is a enrolled master card 2. Check your user manual, or contact the local dealer

X. Use of external power

If it fails to operate the lock normally due to insufficient voltage, use a 9V battery for emergency power supply (pay attention to the positive and negative poles of the battery), and then place an enrolled fingerprint or input the PIN to open the door.

**XI Change batteries**

Procedure → Remove the battery cover → Remove all the used batteries → Load new batteries → Change of batteries completed

Use four AA, Alkaline batteries

Note: 1. Make sure the batteries are in correct position
2. Do not use flat battery and new battery together in the lock
3. Please recycle the battery